

TM 11-6625-3077-24P

---

**TECHNICAL MANUAL**

**ORGANIZATIONAL, DIRECT SUPPORT, AND GENERAL SUPPORT  
MAINTENANCE REPAIR PARTS AND SPECIAL TOOLS LIST  
(INCLUDING DEPOT MAINTENANCE REPAIR PARTS AND SPECIAL TOOLS)  
FOR  
IMPEDANCE BRIDGE ZM-71A/U  
(NSN 6625-00-236-1536)**

THIS PUBLICATION IS A COURTESY QUICK COPY  
FROM THE UNITED STATES ARMY PUBLICATIONS  
DISTRIBUTION CENTER, ST. LOUIS, MISSOURI,  
TO MEET YOUR NEEDS WHILE WE REPLENISH OUR  
REGULAR STOCK.

---

**HEADQUARTERS, DEPARTMENT OF THE ARMY**

**15 NOVEMBER 1983**



Technical Manual }  
No. 11-6625-3077-24P }

**HEADQUARTERS**  
**DEPARTMENT OF THE ARMY**  
Washington, DC, 15 November 1983

**ORGANIZATIONAL, DIRECT SUPPORT, AND GENERAL SUPPORT  
MAINTENANCE REPAIR PARTS AND SPECIAL TOOLS LIST  
(INCLUDING DEPOT MAINTENANCE REPAIR PARTS AND SPECIAL TOOLS  
FOR**

**IMPEDANCE BRIDGE ZM-71A/U  
(NSN 6625-00-236-1536)**

Current as of 8 September 1983

**REPORTING ERRORS AND RECOMMENDING IMPROVEMENTS**

You can help improve this manual. If you find any mistakes or if you know of a way to improve the procedures, please let us know. Mail your letter, DA Form 2028 (Recommended Changes to Publications and Blank Forms), or DA Form 2028-2 located in back of this manual direct to Commander, US Army Communications Electronics Command and Fort Monmouth, ATTN: DRSEL-ME-MP, Fort Monmouth, NJ 07703.

In either case, a reply will be furnished direct to you.

**Table of Contents**

		Page	Illus. Figure
Section	I. Introduction . . . . .	1	
	II. Repair Parts List . . . . .	5	
Group	00 Impedance Bridge, ZM-71A/ U . . . . .	5	1
	01 Switch and Drum Assembly(A100) . . . . .	13	2
	02 Circuit Card Assembly A200 (No parts authorized)		
	03 Circuit Card Assembly A300 (No parts authorized)		
	04 Circuit Card Assembly A400 (No parts authorized)		
	05 Chassis Assembly A500 (No parts authorized)		
	06 Circuit Card Assembly A600 (No parts authorized)		
	07 Resistor Assembly A700 . . . . .	17	3
	0701 Gear Assembly A700A1. . . . .	19	4
	08 Switch Assembly A800 (No parts authorized)		
	09 Dial and Resistor Kit A900 (No parts authorized)		
Section	III. Special Tools List (Not applicable)		
	IV. National Stock Number and Part Number Index. . . . .	20	

## SECTION I INTRODUCTION

---

### 1. Scope

This manual lists spares and repair parts; special tools; special test, measurement, and diagnostic equipment (TMDE), and other special support equipment required for performance of organizational direct support and general support maintenance of the ZM-71A/U. It authorizes the requisitioning and issue of spares and repair parts as indicated by the source and maintenance codes.

### 2. General

This Repair Parts and Special Tools List is divided into the following sections:

a. *Section II. Repair Parts List.* A list of spares and repair parts authorized for use in the performance of maintenance. The list also includes parts which must be removed for replacement of the authorized parts. Parts lists are composed of functional groups in numeric sequence, with the parts in each group listed in figure and item number sequence.

b. *Section III. Special Tools List.* Not applicable.

c. *Section IV. National Stock Number and Part Number Index.* A list, in National item identification number (NIIN) sequence, of all National stock numbers (NSN) appearing in the listings, followed by a list, in alphameric sequence, of all part numbers appearing in the listings. National stock numbers and part numbers are cross-referenced to each illustration figure and item number appearance.

### 3. Explanation of Columns

a. *Illustration.* This column is divided as follows:

(1) *Figure number.* Indicates the figure number of the illustration on which the item is shown.

(2) *Item number.* The number used to identify item called out in the illustration.

b. *Source, Maintenance, and Recoverability (SMR) Codes.*

(1) *Source code.* Source codes indicate the manner of squiring support items for maintenance, repair, or overhaul of end items. Source codes are entered in the first and second positions of the Uniform SMR Code format as follows:

<i>Code</i>	<i>Definition</i>
PA	Item procured and stocked for anticipated or known usage.
XB	Item is not procured or stocked. If not available through salvage, requisition.

#### NOTE

Cannibalization or salvage may be used as a source of supply for any items source coded above except those coded XA and aircraft support items as restricted by AR 750-1..

(2) *Maintenance code.* Maintenance codes are assigned to indicate the levels of maintenance authorized to USE and REPAIR support items. The maintenance codes are entered in the third and fourth positions of the Uniform SMR Code format as follows:

(a) The maintenance code entered in the third position will indicate the lowest maintenance level authorized to remove, replace, and use the support item. The maintenance code entered in the third position will indicate one of the following levels of maintenance

<i>Code</i>	<i>Application/Explanation</i>
O	Support item is removed, replaced, used at the organizational level.
H	Support item is removed, replaced, used at the general support level.
	(b) The maintenance code entered in the fourth position indicates whether the item is to be repaired and identifies the lowest maintenance level with the capability to perform complete repair (i.e., all authorized maintenance functions). This position will contain one of the following maintenance codes:

*Code*

*Application/Explanation*

H – The lowest maintenance level capable of complete repair of the support item is the general support level.

Z – Nonreparable. No repair is authorized

(3) *Recoverability code*. Recoverability codes are assigned to support items to indicate the disposition action on unserviceable items. The recoverability code is entered in the fifth position of the Uniform SMR Code format as follows:

*Codes*

*Recoverability Definition*

Z – Nonreparable item. When condemn and dispose at the level indicated in position 3.

H – Repairable item. When ineconomically repairable, condemn and dispose at the general support level.

c. *National Stock Number*. Indicates the National stock number assigned to the item and will be used for requisitioning purposes.

d. *Federal Supply Code for Manufacturer (FSCM)*. The FSCM is a 5-digit numeric code listed in SB 708-41/42 which is used to identify the manufacturer, distributor, or Government agency, etc.

e. *Part Number*. Indicates the primary number used by the manufacturer (individual, company, firm, corporation, or Government activity), which controls the design and characteristics of the item by means of its engineering drawings, specifications, standards, and inspection requirements to identify an item or range of items.

**NOTE**

When a stock numbered item is requisitioned, the repair part received may have a different part number than the part being replaced.

f. *Description*. Indicates the Federal item name and, if required, a minimum description to identify the item.

g. *Unit of Measure (U/M)*. Indicates the standard of the basic quantity of the listed item as used in performing the actual maintenance function. This measure is expressed by a two-character alphabetical abbreviation (e.g., ea, in, pr, etc.). When the unit of measure differs from the unit of issue, the lowest unit of issue that will satisfy the required units of measure will be requisitioned.

h. *Quantity Incorporated in Unit*. Indicates the quantity of the item used in the breakout shown on the illustration figure, which is prepared for a functional group, subfunctional group, or an assembly.

**4. Special Information**

a. The following publications pertain to the ZM-71A/U and its components:

TM 11-4625-2639-14. Bridge. Capacitance, Inductance, and Resistance ZM-71/U

TM 11-6625-3077-14, Impedance Bridge ZM-71A/U

b. National stock numbers (NSN's) that are missing from P source coded items have been applied for and will be added to this TM by future change/revision when they are entered in the Army Master Data File (AMDF). Until the NSN's are established and published, submit exception requisitions to: Commander, US Army Communications-Electronics Command and Fort Monmouth ATTN: DRSEL-MM, Fort Monmouth, NJ 07703 for the part required to support your equipment.

## 5. How to Locate Repair Parts

*a.* When National stock number or part number is unknown.

(1) *First.* Using the table of contents, determine the functional group within which the item belongs. This is necessary since illustrations are prepared for functional groups and listings are divided into the same groups.

(2) *Second.* Find the illustration covering the functional group to which the item belongs.

(3) *Third.* Identify the item on the illustration and note the illustration figure and item number of the item.

(4) *Fourth.* Using the Repair Parts Listing, find the figure and item number noted on the illustration.

(*b*) When National stock number or part number is known.

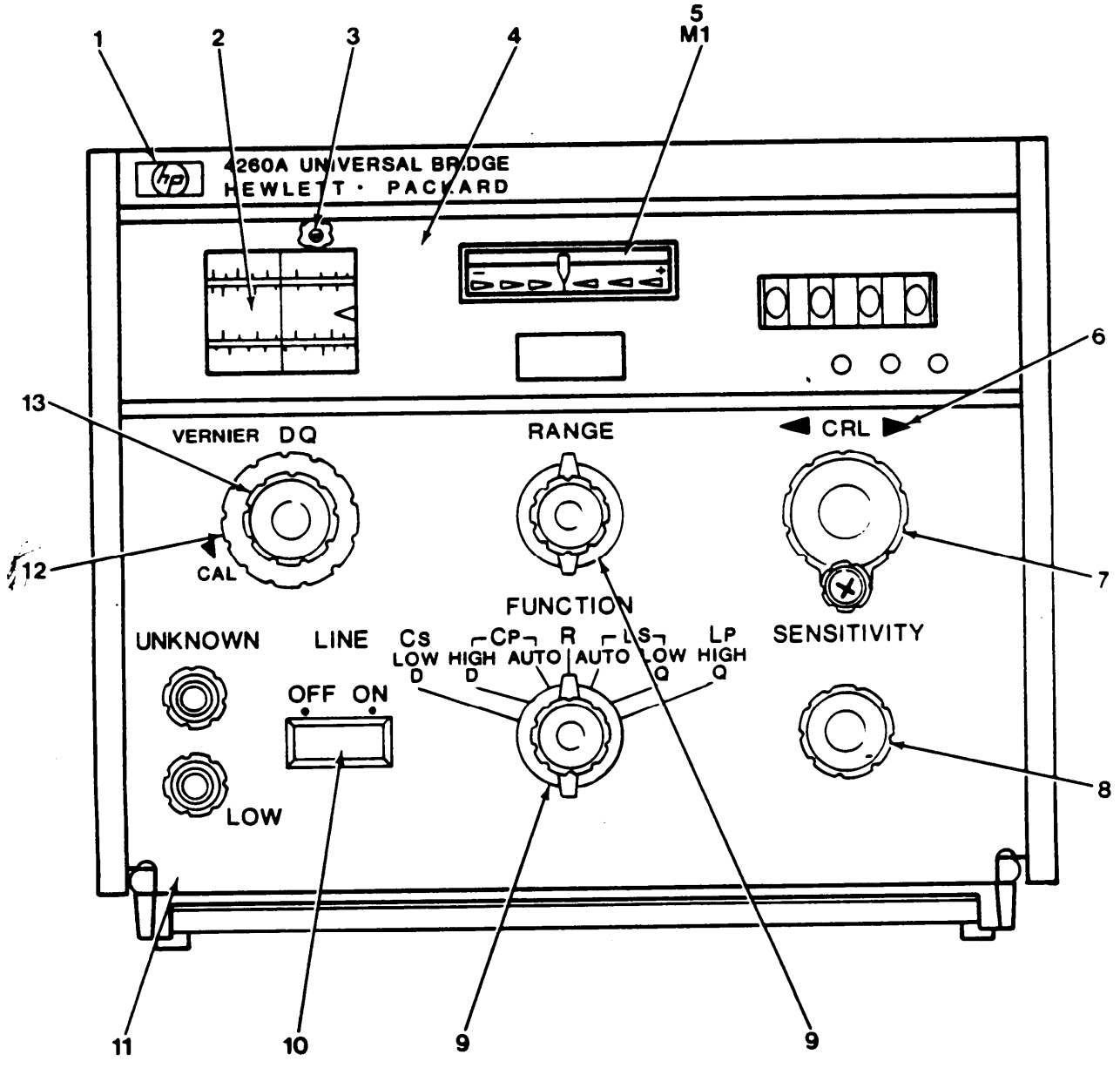
(1) *First.* Using the Index of National Stock Numbers and Part Numbers, find the pertinent National stock number or part number. This index is in NIIN sequence followed by a list of part numbers in alphameric sequence, cross-referenced to the illustration figure number and item number.

(2) *Second.* After finding the figure and item number, locate the figure and item number in the repair parts list.

## 6. Abbreviations

Not applicable.

(Next printed page is 4)

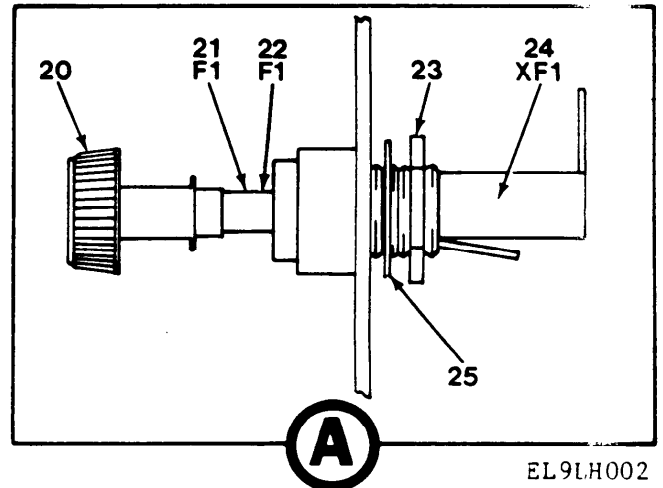
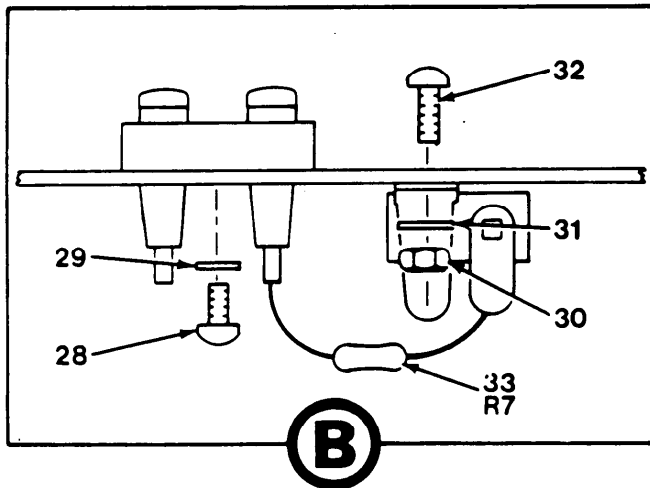
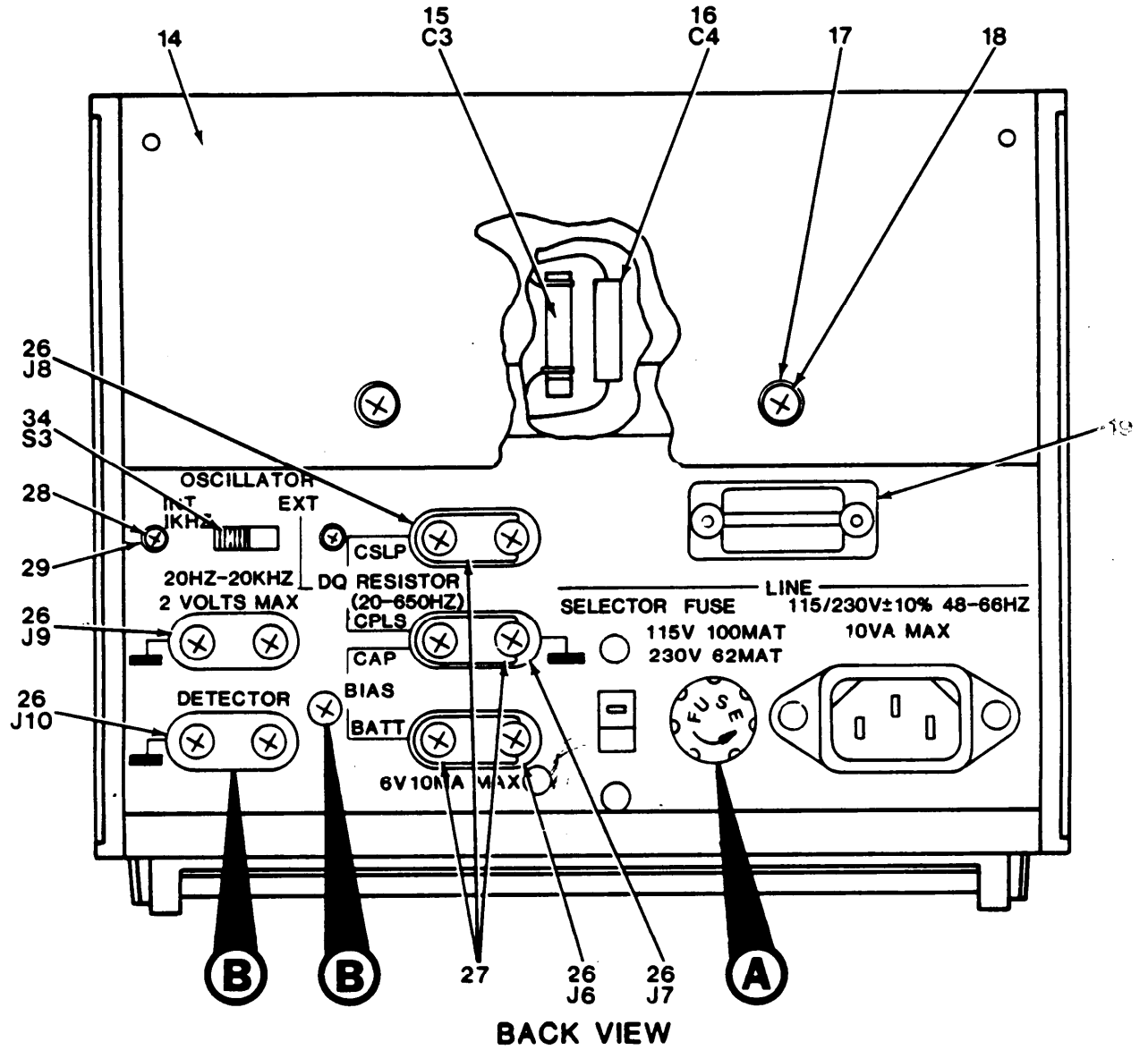


FRONT VIEW

EL9LH001

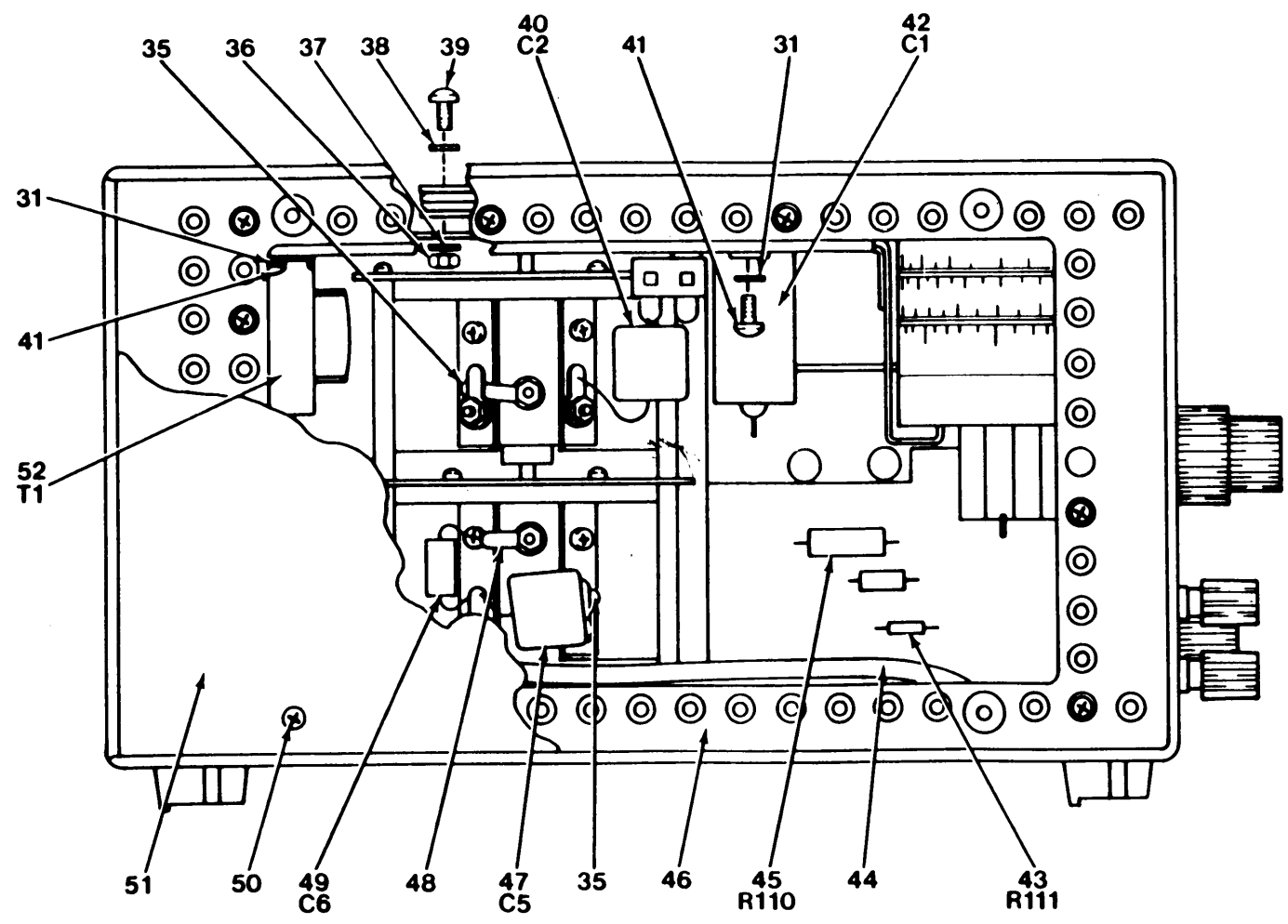
Figure 1. Impedance Bridge, ZM-71A/U (Sheet 1 of 5)





EL9LH002

Figure 1. Impedance Bridge, ZM-71A/U (Sheet 2 of 5).



LEFT SIDE VIEW

EL9LH003

Figure 1. Impedance Bridge, ZM-71A/U (Sheet 3 of 5).

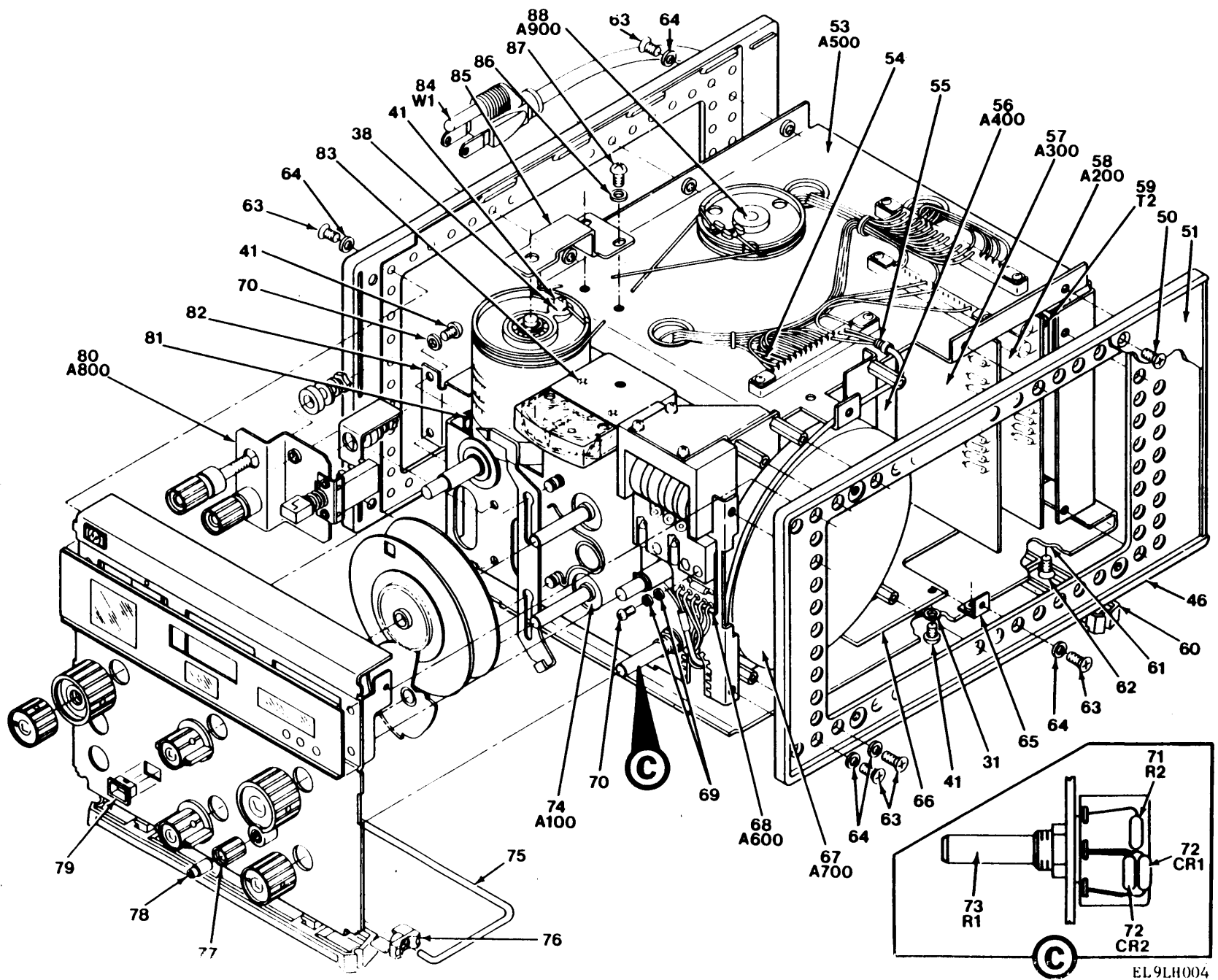


Figure 1. Impedance Bridge, ZM-71A/U (Sheet 4 of 5).

REF DES	ITEM NO	REF DES	ITEM NO	REF DES	ITEM NO	REF DES	ITEM NO	REF DES	ITEM NO	REF DES	ITEM NO
A100	74										
A200	58										
A300	57										
A400	56										
A500	53										
A600	68										
A700	67										
A800	80										
A900	88										
C1	42										
C2	40										
C3	15										
C4	16										
C5	47										
C6	49										
CR1	72										
CR2	72										
F1	21										
F1	22										
J6	26										
J7	26										
J8	26										
J9	26										
J10	26										
M1	5										
R1	73										
R2	71										
R7	33										
R110	45										
R111	43										
S3	34										
T1	52										
T2	59										
W1	84										
XF1	24										

Figure 1. Impedance Bridge, ZM-71A/U (Sheet 5 of 5)

SECTION II								
(1)	(2)	(3)	(4)	(5)	(6)	(7)	(8)	
ILLUSTRATION					DESCRIPTION		QTY	
(a)	(b)	NATIONAL		PART			INC	
FIG	ITEM	STOCK		NUMBER			IN	
NO	NO	NUMBER	FSCM	NUMBER	USABLE ON CODE	U/M	UNIT	
GROUP 00 INSURANCE BRIDGE, ZM-71A/U								
1	1	XBHZZ	28480	7120-1245	PLATE, IDENT	EA	1	
1	2	XBHZZ	28480	04260-5030	WINDOW, OBSVR	EA	1	
1	3	PAHZZ	28480	0570-0212	SCREW, MACHINE	EA	2	
1	4	XBHZZ	28480	04260-5027	WINDOW, OBSVR	EA	1	
1	5	PAHZZ	28480	1120-0768	METER, NULL	EA	1	
1	6	XBHZZ	28480	04260-5024	LENS, FINDER	EA	1	
1	7	PAOZZ	5355-00-411-2591	28480	0370-0275	KNOB	EA	1
1	8	PAOZZ	5355-00-083-8438	28480	0370-0256	KNOB	EA	1
1	9	PAOZZ	5355-00-767-9444	05869	5027-520	KNOB	EA	2
1	10	XBHZZ	28480	5040-1124	KNOB	EA	1	
1	11	XBHZZ	28480	04260-10021	PANEL, FRONT	EA	1	
1	12	PAOZZ	5355-00-083-8162	28480	0370-0272	KNOB	EA	1
1	13	PAOZZ	28480	0370-0267	KNOB	EA	1	
1	14	XBHZZ	28480	5060-8573	COVER, TOP	EA	1	
1	15	XBHZZ	28480	0121-0236	CAP, VAR, CERAMIC	EA	1	
1	16	PAHZZ	5910-00-725-7012	81349	CC20SH100F	CAPACITOR, FIXED, CER	EA	1
1	17	PAHZZ	5310-00-401-56666	28480	2190-0775	WASHER, FLAT	EA	2
1	18	PAHZZ	5305-00-054-6651	96906	MS51957-27	SCREW, MACHINE	EA	2
1	19	XBHZZ	28480	7120-0461	PLATE, IDENT	EA	1	
1	20	PAOZZ	5920-01-079-6571	75915	345001-020	FUSEHOLDER SUBASSEM	EA	1
1	21	PAOZZ	5920-00-356-2185	18876	10018550-104	FUSE, CARTRIDGE	EA	1
1	22	PAOZZ	5920-00-229-1312	81349	F02B250V1-16A	FUSE, CARTRIDGE	EA	1
1	23	PAHZZ	5920-01-079-6571	75915	903-070	FUSEHOLDER SUBASSEM	EA	1
1	24	PAHZZ	5920-01-027-3058	28480	2110-0470	FUSEHOLDER, EXTRACTO	EA	1
1	25	PAHZZ	5970-01-005-2884	75915	901-129	INSULATOR, WASHER	EA	1
1	26	PAHZZ	5905-00-093-0945	28480	04260-5028	RESISTOR, ELECTRICAL	EA	5
1	27	XBHZZ	28480	04260-1049	LINK, TERM CONN	EA	3	
1	27	XBHZZ	28480	04260-1049	LINK, TERM CONN	EA	3	
1	28	PAHZZ	5305-00-054-5636	96906	MS51957-2	SCREW, MACHINE	EA	7
1	29	PAHZZ	5310-00-928-2690	81349	MS35338-134	WASHER, LOCK	EA	7
1	30	PAHZZ	5310-00-934-9761	96906	MS35649-264	NUT, PLAIN, HEXAGON	EA	3
1	31	PAHZZ	5310-00-616-3554	96906	MS35335-29	WASHER, LOCK	EA	21
1	32	PAHZZ	5305-00-054-6651	96906	MS51957-27	SCREW, MACHINE	EA	2
1	33	PAHZZ	5905-00-110-0388	81349	RCR07G104JS	RESISTOR, FIXED, COMP	EA	1
1	34	PAHZZ		S0542	SL262B4L	SWITCH, SLIDE	EA	1
1	35	XBHZZ	78581	922		TERMINAL, LUG	EA	2
1	36	PAHZZ	28480	0590-0234		NUT, PLAIN, HEX	EA	3
1	37	PAHZZ	5310-00-543-2410	96906	MS35338-40	WASHER, LOCK	EA	5
1	38	PAHZZ	5310-00-578-4942	28480	3050-0105	WASHER, FLAT	EA	7
1	39	PAHZZ	28480	0570-0380		SCREW, MACHINE	EA	3

SECTION II									
(1)	(2)	(3)	(4)	(5)	(6)	(7)	(8)		
ILLUSTRATION					DESCRIPTION		QTY		
(a)	(b)	NATIONAL		PART			INC		
FIG	ITEM	STOCK		NUMBER			IN		
NO	NO	CODE	NUMBER	FSCM	NUMBER	USABLE ON CODE	U/M	UNIT	
1	40	PAHZZ		S0345	CM9882H332KZ	CAP,FXD,MICA	EA	1	
1	41	PAHZZ	5305-00-054-6650	96906	MS51957-26	SCREW,MACHINE	EA	23	
1	42	PAHZZ	5910-0-451-32459	28480	0160-1540	CAPACITOR,FIXED,MIC	EA	1	
1	43	PAHZZ		81349	RNC65K15R8FS	RESISTOR,FIXED,FILM	EA	1	
1	44	XBHZZ		28480	04260-7203	CABLE ASSEMBLY	EA	1	
1	45	PAHZZ		07716	MEC79-500B	RES,FXD,FILM	EA	1	
1	46	PAHZZ	6625-00-412-1207	28480	5060-0703	RACK,ELECTRICAL EQU	EA	2	
1	47	PAHZZ		S0345	CM98B2H122KZ	CAP,FXD,MICA	EA	1	
1	48	XBHZZ		28480	0360-0701	TERMINAL,LUG	EA	2	
1	49	PAHZZ		28480	0160-1654	CAP,FXD,PAPER	EA	1	
1	50	PAHZZ	5305-00-066-7326	96906	MS24693C24	SCREW,MACHINE	EA	8	
1	51	PAHZZ	5340-00-978-5186	28480	5000-8565	COVER,SIDE	EA	2	
1	52	PAHZZ	5950-00-451-3196	28480	04260-8602	TRANSFORMER	EA	1	
1	53	PAHZZ		28480	04260-7053	CHASSIS ASSEMBLY	EA	1	
1	54	XBHZZ		79963	123-.144	TERMINAL,LUG	EA	1	
1	55	XBHZZ		28480	04260-7202	CABLE ASSEMBLY	EA	1	
1	56	XBHZZ		28480	04260-7202	CABLE ASSEMBLY	EA	1	
1	56	PAHZZ	6625-00-139-0500	28480	04260-7724	TEST SET SUBASSEMBL	EA	1	
1	57	PAHZZ	6625-00-139-0499	228480	04260-7023	TEST SET SUBASSEMBL	EA	1	
1	58	PAHZZ	6625-00-139-0498	28480	04260-7022	POWER SUPPLY SUBASS	EA	1	
1	59	PAHZZ	5950-00-451-3197	28480	04260-8603	TRANSFORMER	EA	1	
1	60	PAHZZ	5999-00-112-9509	28480	5060-0728	BLOCK,MOUNTING,TEST	EA	2	
1	61	XBHZZ		28480	5000-8583	COVER,BOTTOM	EA	1	
1	62	PAHZZ		96906	MS24696C25	SCREW,MACHINE	EA	2	
1	63	PAHZZ	5305-00-958-5453	96906	MS35190-236	SCREW,MACHINE	EA	21	
1	64	PAHZZ	5310-00-905-9862	96906	MS35336-56	WASHER,LOCK	EA	202	
1	65	XBHZZ		28480	04260-01202	BRACKET,MOUNTING	EA	2	
1	66	XBHZZ		28480	04260-1086	BRACKET,MOUNTING	EA	1	
1	67	XBHZZ		28480	04260-7028	RESISTOR ASSY,VAR	EA	1	
1	68	PAHZZ	6625-00-139-0516	28480	04260-7026	TEST SET SUBASSEMBL	EA	1	
1	69	PAHZZ	5310-00-550-3715	96906	MS35333-70	WASHER,LOCK	EA	4	
1	70	PAHZZ	5305-00-054-5651	96906	MS51957-17	SCREW,MACHINE	EA	2	
1	71	PAHZZ	5905-00-106-1356	81349	RCR07G152JS	RESISTOR,FIXED,COMP	EA	1	
1	72	PAHZZ	5961-00-954-9182	28480	1910-0016	SEMICONDUCTOR DEVIC	EA	2	
1	73	PAHZZ		S0558	RV24YN35RB5K	RESISTOR,VARIABLE	EA	1	
1	74	XBHHH		28480	04260-70020	SW AND DRUM ASSY	EA	1	
1	75	PAHZZ	6625-00-232-0934	28480	1490-0032	STAND,TILT,CALIBRAT	EA	1	
1	76	PAHZZ	5340-0-978-7589	28480	5040-0700	BAIL,CABINET	EA	2	
1	77	PAOZZ	5355-00-579-2318	28480	03710-0050	KNOB	EA	1	
1	78	PAHZZ	6625-00-818-5973	28480	1410-0033	BUSHING,KNOB	EA	1	
1	79	PAHZZ	6210-01-064-6431	28480	0370-0914	LENS,LIGHT	EA	1	

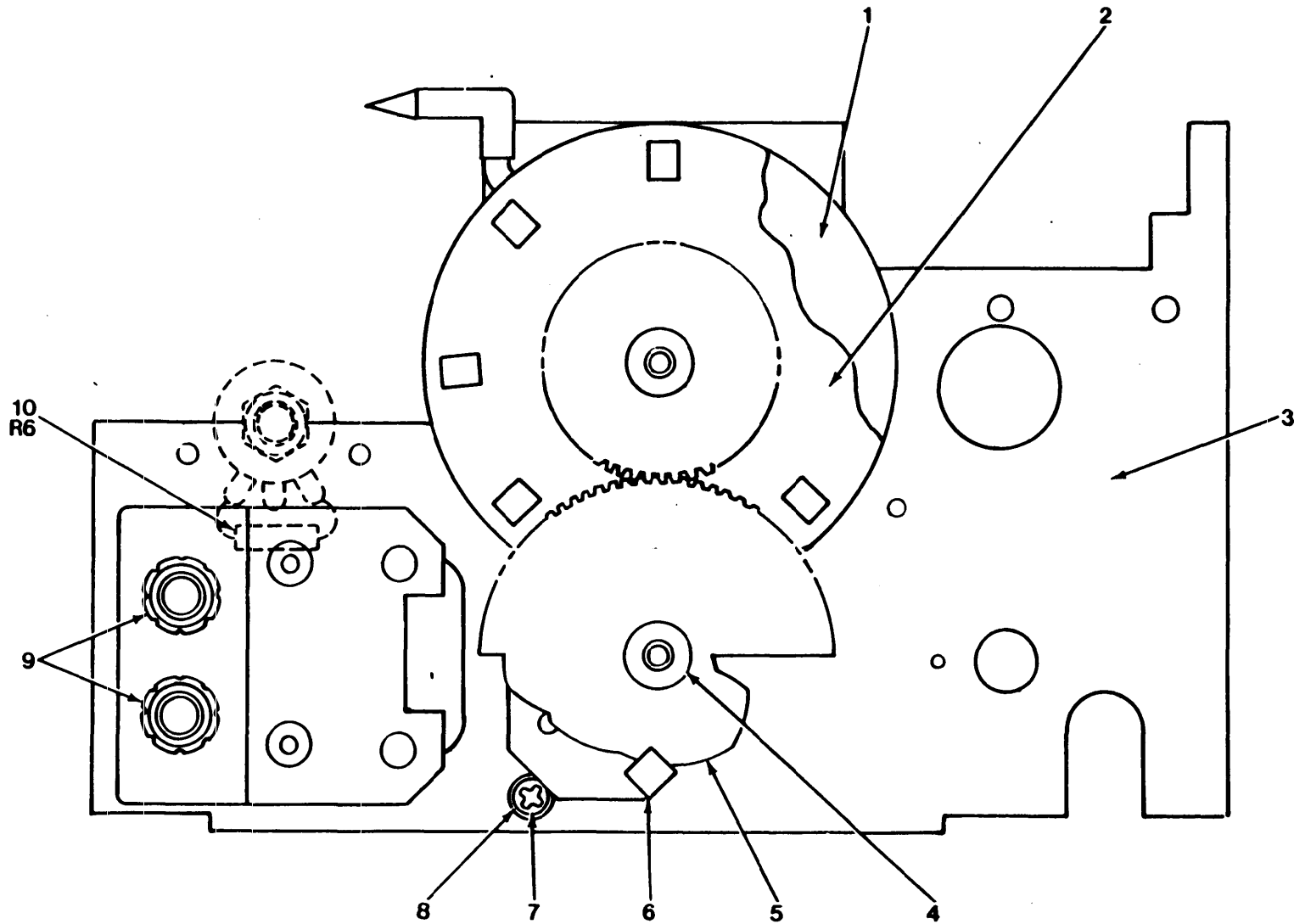
## SECTION II

(1)	(2)	(3)	(4)	(5)	(6)	(7)	(8)	
ILLUSTRATION					DESCRIPTION		QTY	
(a)	(b)	NATIONAL		PART			INC	
FIG	ITEM	SMR	STOCK				IN	
NO	NO	CODE	NUMBER	FSCM	NUMBER	USABLE ON CODE	U/M	
							UNIT	
1	80	PAHZZ		28480	04260-60010	SWITCH ASSY,PUSH	EA	1
1	81	PAHZZ	5325-00-493-8271	01538	375	GROMMET, NONMETALLIC	EA	1
1	82	XBHZZ		28480	04260-10023	PLATE, ELEC SHLD	EA	1
1	83	PAHZZ	5305-00-054-5652	96906	MS51957-18	SCREW, MACHINE	EA	2
1	84	PAOZZ	6150-00-08-5075	16428	KH7081	CABLE ASSEMBLY, POWE	EA	1
1	85	XBHZZ		28480	04260-1034	RETAINER	EA	1
1	86	PAHZZ	5310-00-058-3599	96906	MS35335-57	WASHER, LOCK	EA	2
1	87	PAHZZ	5305-00-054-5653	96906	MS51957-19	SCREW, MACHINE	EA	2
1	88	PAHZZ	5905-00-451-5167	28480	04260-7031	RESISTOR, VARIABLE, W	EA	1





PREFIX ALL REFERENCE  
DESIGNATIONS WITH A100



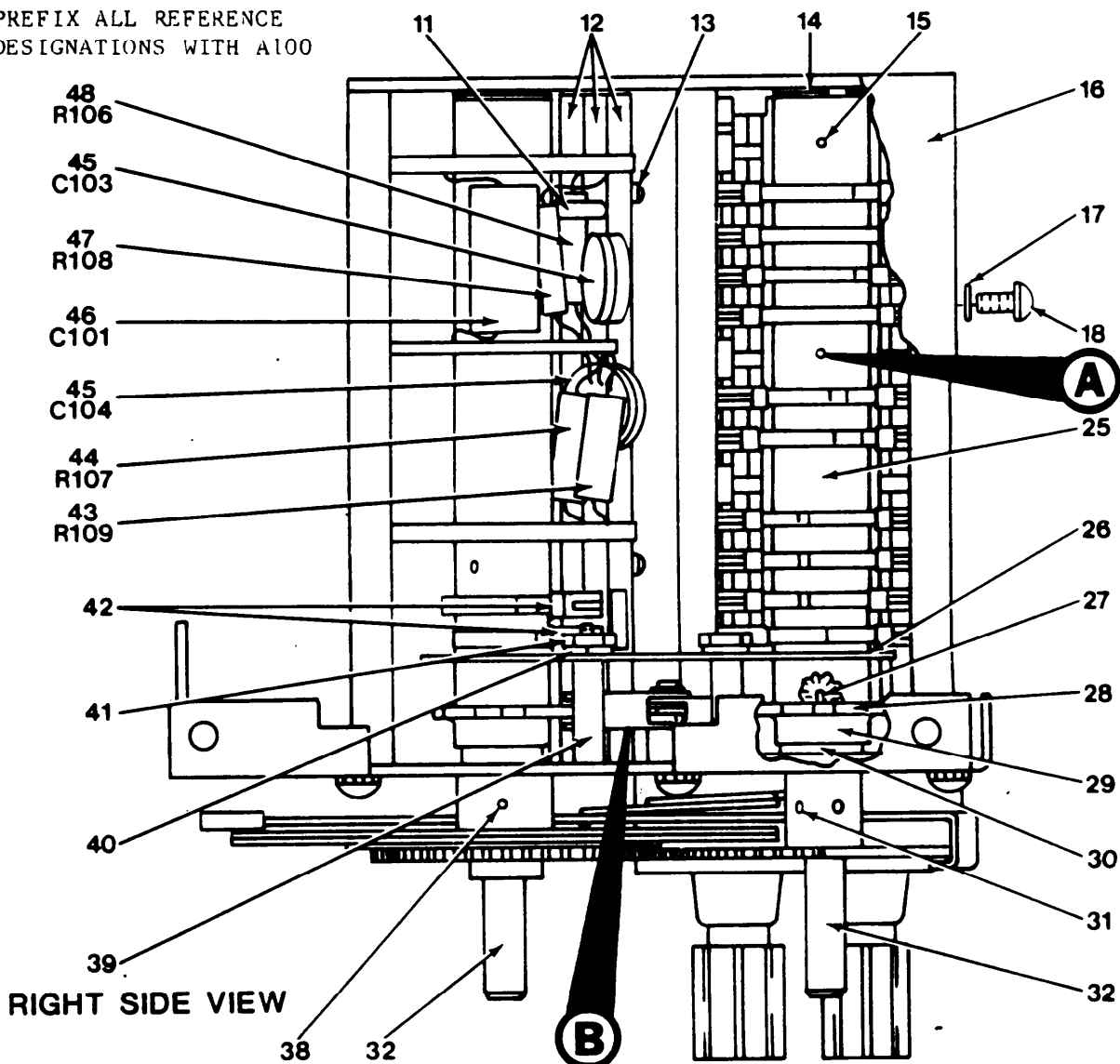
FRONT VIEW

EL9LH005

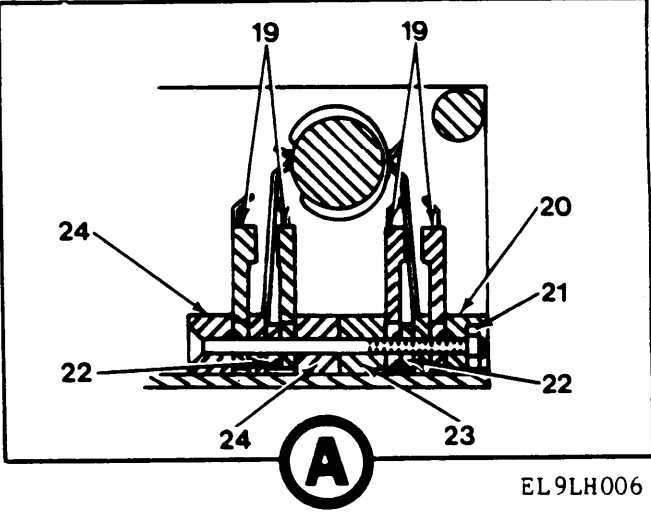
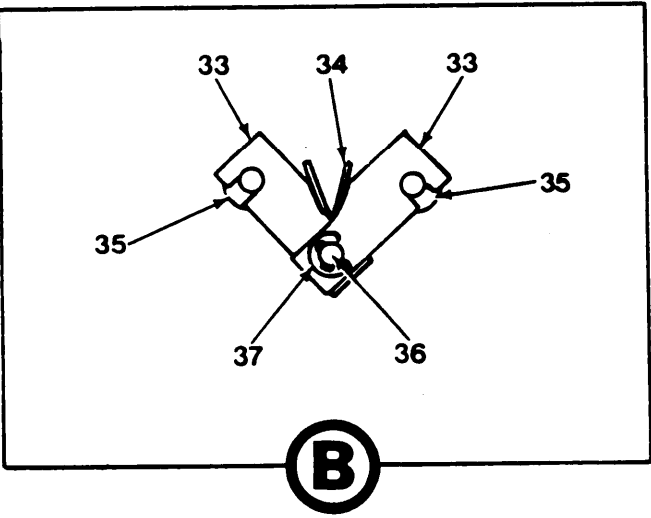
Figure 2. Switch and Drum Assembly (Sheet 1 of 4).

Figure 2. Switch and Drum Assembly (Sheet 1 of 4).

PREFIX ALL REFERENCE DESIGNATIONS WITH A100



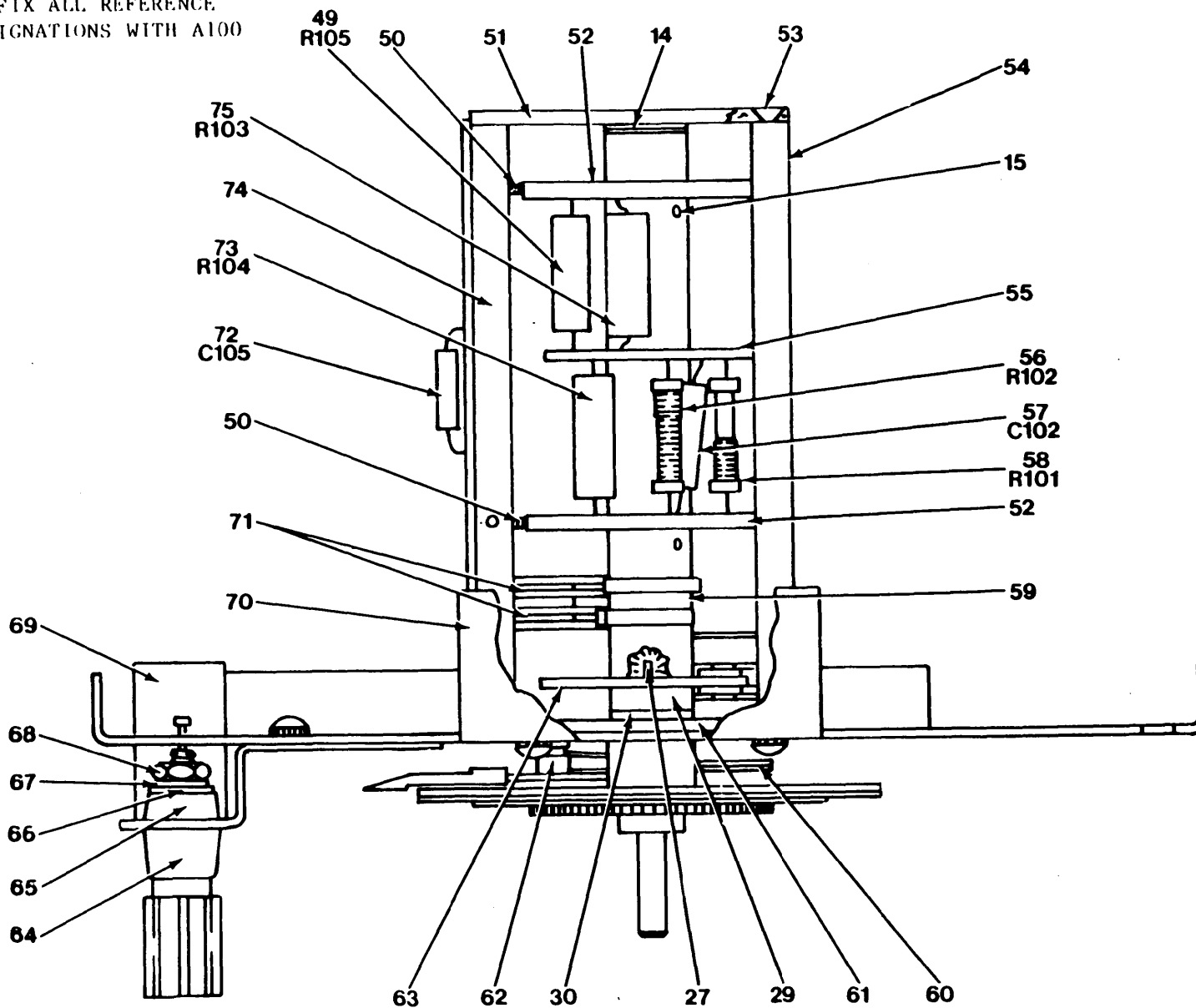
RIGHT SIDE VIEW



EL9LH006

Figure 2. Switch and Drum Assembly (Sheet

PREFIX ALL REFERENCE  
DESIGNATIONS WITH A100



TOP VIEW

Figure 2. Switch and Drum Assembly (Sheet 3 of 4).

EL9LH007

T/M 11-6625-3077-24P

REF DES	ITEM NO	REF DES	ITEM NO	REF DES	ITEM NO	REF DES	ITEM NO	REF DES	ITEM NO	REF DES	ITEM NO
C101	46										
C102	57										
C103	45										
C104	45										
C105	72										
R6	10										
R101	58										
R102	56										
R103	75										
R104	73										
R105	49										
R106	48										
R107	44										
R108	47										
R109	43										

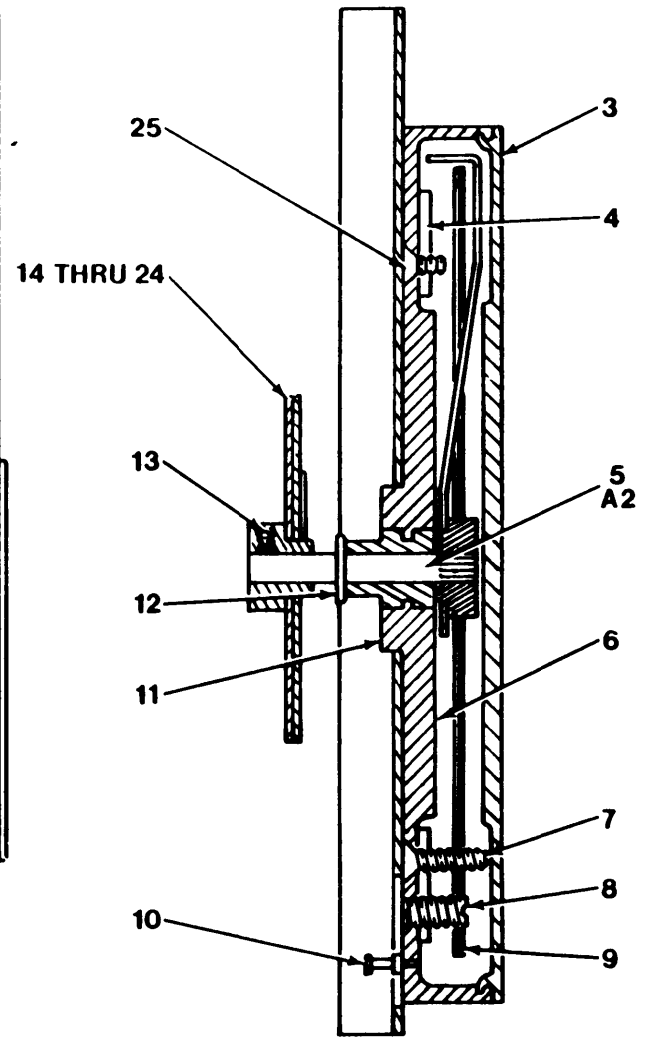
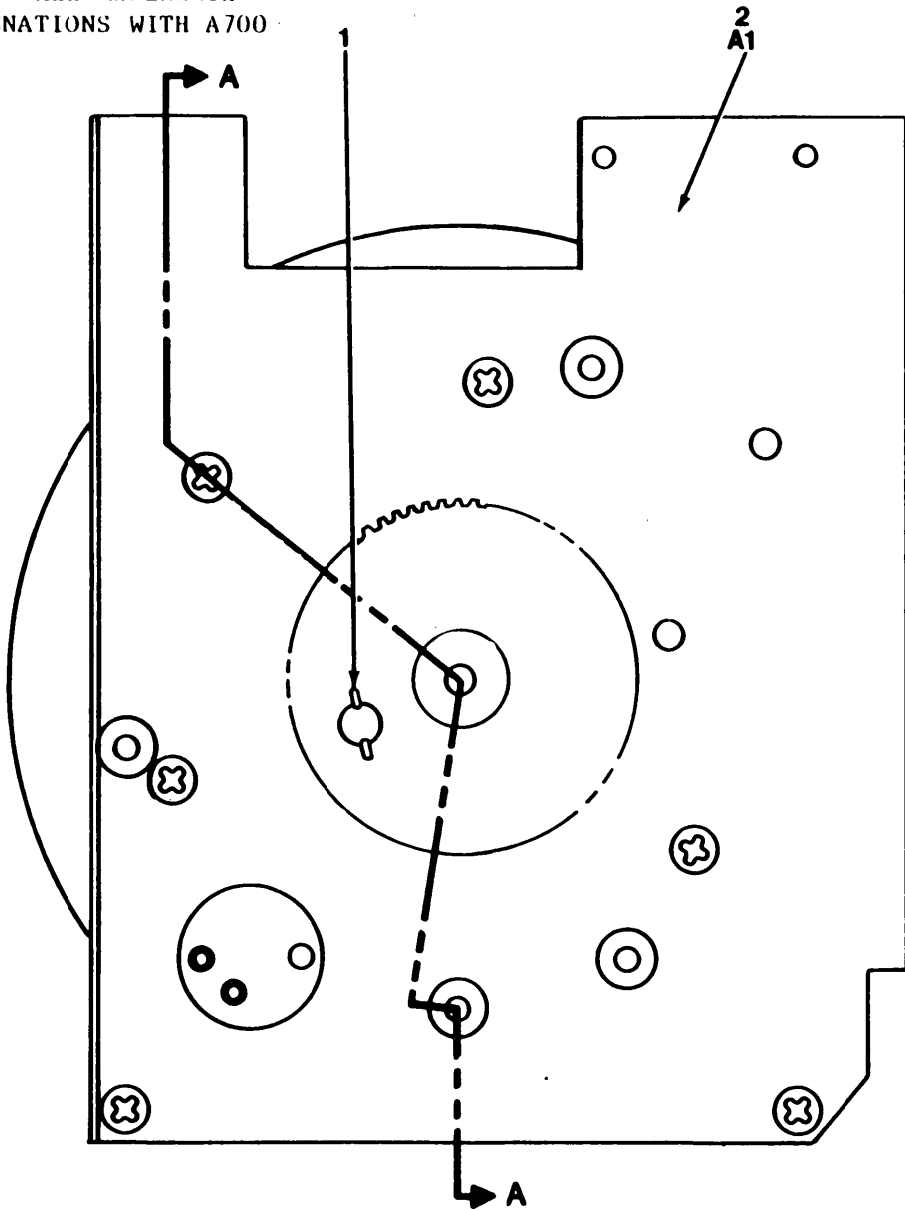
Figure 2. Switch and Drum Assembly (Sheet 4 of 4).

SECTION II								
(1)	(2)	(3)	(4)	(5)	(6)	(7)	(8)	
ILLUSTRATION					DESCRIPTION		QTY	
(a)	(b)	NATIONAL		PART			INC	
FIG	ITEM	STOCK		NUMBER		USABLE ON CODE	IN	
NO	NO	NUMBER	FSCM	NUMBER			UNIT	
GROUP 01 SWITCH AND DRUM ASSEMBLY (A100)								
2	1	XBHZZ		28480	04260-5061	DIAL, SCALE	EA 1	
2	2	XBHZZ		28480	04260-5062	DIAL, SCALE	EA 1	
2	3	XBHZZ		28480	04260-1025	PLATE	EA 1	
2	4	XBHZZ		28480	04260-3027	HUB, BODY	EA 1	
2	5	XBHZZ		28480	04260-3028	CAM, CONTROL	EA 1	
2	6	XBHZZ		28480	04260-1079	BRACKET, POINTER	EA 1	
2	7	PAHZZ	5305-00-054-5653	96906	MS51957-19	SCREW, MACHINE	EA 3	
2	8	PAHZZ	5310-00-058-3599	96906	MS35335-57	WASHER, LOCK	EA 8	
3	9	PAHZZ	5940-00-345-9260	28480	1510-0011	POST, BINDING, ELECTR	EA 2	
2	10	PAHZZ		19701	MF6C01R0F	RES, FXD, FILM	EA 1	
2	11	PAHZZ		28480	04260-3052	SCREW, TIP	EA 2	
2	12	XBHZZ		28480	04260-5054	INSULATOR, PLATE	EA 3	
2	13	PAHZZ	5305-00-054-5653	96906	MS51957-19	SCREW, MACHINE	EA 3	
2	14	PAHZZ	5310-00-930-2722	28480	1480-0008	PIN, SPIRAL	EA 2	
2	16	XBHZZ		28480	04260-1060	COVER, SWITCH	EA 1	
2	17	PAHZZ	5310-00-486-5579	28480	3050-0067	WASHER, FLAT	EA 2	
2	18	PAHZZ	5305-00-054-5644	96906	MS51957-11	SCREW, MACHINE	EA 2	
2	19	XBHZZ		28480	04260-5051	INSULATOR, SPREADER	EA 4	
2	20	PAHZZ		28480	04260-5057	CONTACT ASSY, ELEC	EA 1	
2	21	PAHZZ	5310-00-997-3078	28480	2260-0002	NUT, SPECIAL	EA 6	
2	22	PAHZZ	5999-00-360-6462	28480	04260-5049	CONTACT ASSEMBLY, EL	EA 2	
2	23	PAHZZ	5999-00-360-6466	28480	04260-5056	CONTACT ASSEMBLY, EL	EA 1	
2	24	PAHZZ	5999-00-360-6467	28480	04260-5050	CONTACT ASSEMBLY, EL	EA 2	
2	25	XBHZZ		28480	04260-5052	CAM, CONTROL	EA 1	
2	26	XBHZZ		28480	04260-1065	PLATE, ELEC SHLD	EA 1	
2	27	XBHZZ		28480	051-0397	PIN, STRAIGHT	EA 2	
2	28	XBHZZ		28480	04260-1069	CAM, CONTROL	EA 1	
2	29	XBHZZ		28480	04260-3046	HUB, BODY	EA 2	
2	30	XBHZZ		28480	04260-3045	HUB, BODY	EA 2	
2	31	XBHZZ		28480	04260-3045	HUB, BODY	EA 2	
2	32	XBHZZ		28480	04260-3050	SHAFT, STRAIGHT	EA 2	
2	33	PAHZZ	6625-00-432-5216	28480	04260-1067	ARM, DETENT, SWITCH	EA 2	
2	34	XBHZZ		28480	04260-8547	SPRING, TORSION	EA 1	
2	35	PAHZZ	6625-00-432-5217	28480	04260-3056	ROLLER, DETENT, SWITC	EA 2	
2	36	XBHZZ		28480	04260-3057	SHAFT, SHOULDERED	EA 1	
2	37	XBHZZ		79136	5133-14SZDR	RING, RETAINING	EA 1	
2	38	XBHZZ		28480	1480-0085	PIN, SPIRAL	EA 1	
2	39	XBHZZ		28480	0380-0033	SPACER, SLEEVE	EA 2	

SECTION II								(7)	(8)
(1)	(2)	(3)	(4)	(5)	(6)				
ILLUSTRATION		DESCRIPTION							QTY
(a)	(b)	NATIONAL		PART				INC	
FIG	ITEM	STOCK		NUMBER				IN	
NO	NO	NUMBER	FSCM	NUMBER		USABLE ON CODE	U/M	UNIT	
2	40	PAHZZ 5310-00-515-7999	96906	MS35339-40	WASHER, LOCK		EA	2	
2	41	PAHZZ 5310-00-934-9761	96906	MS35649-264	NUT, PLAIN, HEXAGON		EA	2	
2	42	PAHZZ 5999-00-360-6476	28480	04260-1073	CONTACT, ELECTRICAL		EA	2	
2	43	PAHZZ	75042	MEBT0-3002F	RES, FXD, FILM		EA	1	
2	44	PAHZZ	75042	MEBT0-3001F	RES, FXD, FILM		EA	1	
2	45	PAHZZ 5910-00-728-2194	72982	557-06ZUP0-34R	CAPACITOR, VARIABLE		EA	2	
2	46	PAHZZ	S0333	FN-H2P22K	CAM, FXD, PLASTIC		EA	1	
2	47	PAHZZ	75042	MEBT9-9703F	RES, FXD, FILM		EA	1	
2	48	PAHZZ	75042	MEBTO-9702F	RES, FXD, FILM		EA	1	
2	49	PAHZZ	75042	MECT9-1002B	RES, FXD, FILM		EA	1	
2	50	PAHZZ 5999-00-360-6468	28480	04260-1055	CONTACT, ELECTRICAL		EA	2	
2	51	XBHZZ	28480	04260-1058	PLATE, RET, SHAFT		EA	1	
2	52	PAHZZ 5999-00-360-6497	28480	04260-7045	CONTACT ASSEMBLY, EL		EA	2	
2	53	PAHZZ 5305-0-766-2422	96906	MS51959-1	SCREW, MACHINE		EA	10	
2	54	XBHZZ	28480	04260-3047	SPACER, THREADED		EA	2	
2	55	XBHZZ	28480	04260-8707	PRINTED WIRG BO		EA	1	
2	56	PAHZZ 5905-00-451-5152	28480	04255-8604	RESISTOR, FIXED, WIRE		EA	1	
2	57	PAHZZ	S0333	MXT5D22K	CAP, FXD, PLASTIC		EA	1	
2	58	PAHZZ 5905-00-098-8789	28480	04260-8604	RESISTOR, FXD, WIRE		EA	1	
2	59	XBHZZ	28480	04260-5053	CAM, CONTROL		EA	1	
2	60	XBHZZ	28480	04260-8543	SPRING, TORSION		EA	1	
2	61	XBHZZ	28480	04260-1068	PLATE, RET, SHAFT		EA	1	
2	62	XBHZZ	28480	04260-3020	PIN, GRVD, HEADLESS		EA	2	
2	63	XBHZZ	28480	04260-1070	CAM, CONTROL		EA	1	
2	64	XBHZZ	28480	04260-5021	INSULATOR, BSHG		EA	2	
2	65	XBHZZ	28480	04260-50222	INSULATOR, BSHG		EA	2	
2	66	PAHZZ 5310-00-167-0834	88044	AN960-10L	WASHER, FLAT		EA	2	
2	67	PAHZZ 5310-00-045-3296	96906	MS35338-43	WASHER, LOCK		EA	2	
2	68	PAHZZ 5310-00-934-9765	96906	MS35650-304	NUT, PLAIN, HEXAGON		EA	2	
2	69	XBHZZ	28480	04260-1022	BRACKET, MOUNTING		EA	1	
2	70	XBHZZ	28480	04260-8701	PRINTED WIRG BD		EA	1	
2	71	PAHZZ 5999-00-360-6477	28480	04260-1074	CONTACT, ELECTRICAL		EA	4	
2	72	PAHZZ	81349	CC20CG4R0C	CAPACITOR, FIXED, CER		EA	1	
2	73	PAHZZ	75042	MECT9-1001B	RES, FXD, FILM		EA	1	
2	74	XBHZZ	28480	04260-5043	INSULATOR, PLATE		EA	1	
2	75	PAHZZ	75042	MECT9-1000B	RES, FXD, FILM		EA	1	



PREFIX ALL REFERENCE  
DESIGNATIONS WITH A700

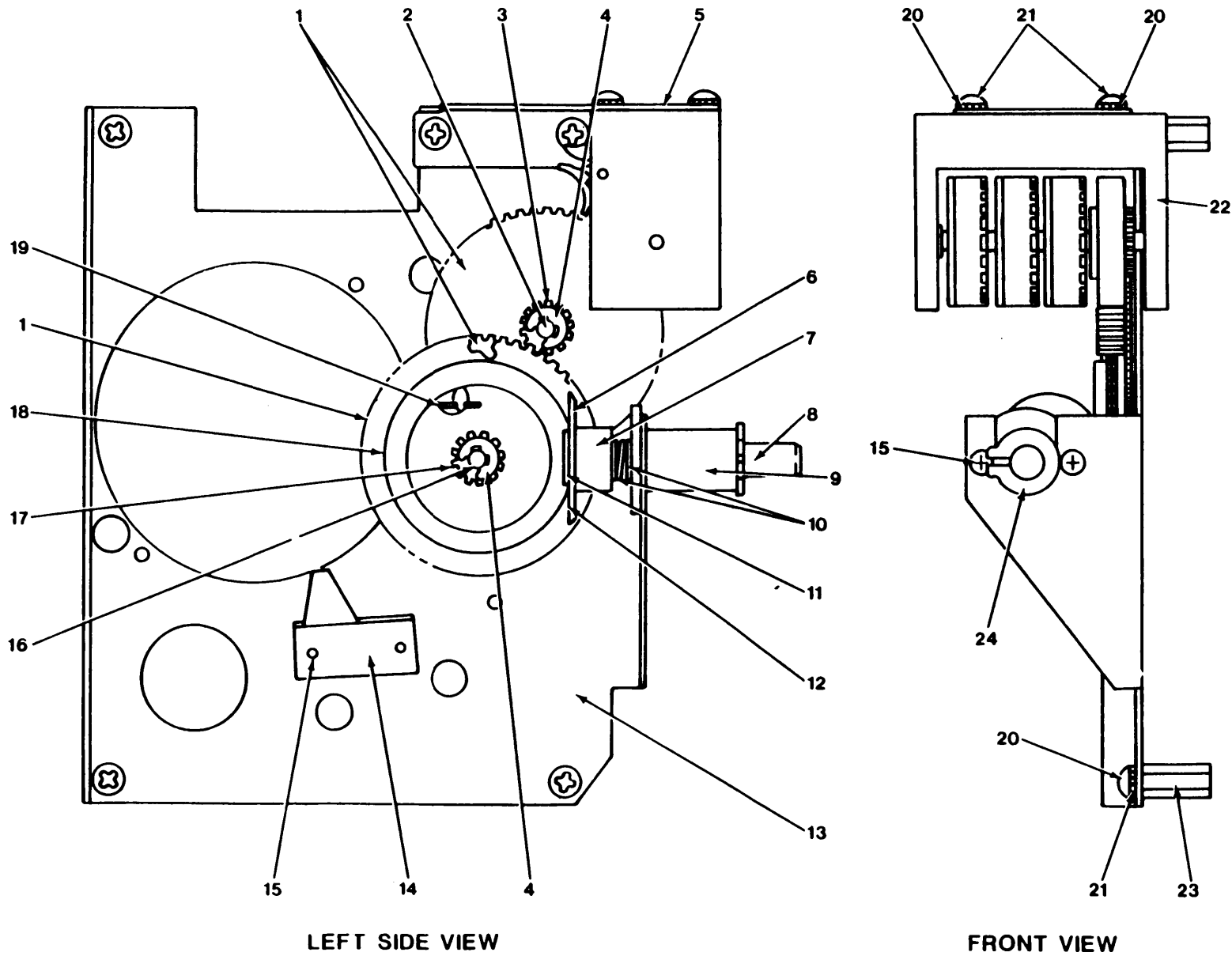


SECTION A-A

Figure 3. Resistor Assembly.



SECTION II								(7)	(8)
(1)	(2)	(3)	(4)	(5)	(6)			(7)	(8)
ILLUSTRATION								QTY	
(a)	(b)							INC	
FIG	ITEM	SMR	NATIONAL STOCK	PART	DESCRIPTION		IN		
NO	NO	CODE	NUMBER	FSCM	NUMBER	USABLE ON CODE	U/M	UNIT	
GROUP 07 RESISTOR ASSEMBLY (A700)									
3	1	XBHZZ		28480	1460-0305	SPRING, TENSION	EA	1	
3	2	XBHZZ		28480	04260-7027	GEAR ASSEMBLY	EA	1	
3	3	XBHZZ		28480	04260-5026	COVER, RES ASSY	EA	1	
3	4	XBHZZ		28480	04260-1044	RING, MOUNTING	EA	1	
3	5	PAHZZ		28480	04260-7029	SWEEPER ASSY	EA	1	
3	6	XBHZZ		28480	04260-1047	CONTACT, ELEC	EA	1	
3	7	PAHZZ	5305-00-066-7328	96906	MS24693C27	SCREW, MACHINE	EA	1	
3	8	XBHZZ		28480	04260-3041	SCREW, SHOULDER	EA	7	
3	9	XBHZZ		28480	04260-7058	RING ASSY	EA	1	
3	10	XBHZZ		28480	0360-0749	TERMINAL, STUD	EA	2	
3	11	XBHZZ		28480	04260-5025	CASE, RES ASSY	EA	1	
3	12	XBHZZ		79136	5133-14SZDR	RING, RETAINING	EA	1	
3	13	PAHZZ	5305-00-717-6948	896906	MS51963-11	SET SCREW	EA	2	
3	14	XBHZZ		28480	04260-7110	GEAR ASSY SELECTIVE	EA	1	
3	15	XBHZZ		28480	04260-7111	GEAR ASSY SELECTIVE	EA	1	
3	16	XBHZZ		28480	04260-7112	GEAR ASSY SELECTIVE	EA	1	
3	17	XBHZZ		28480	04260-7113	GEAR ASSY SELECTIVE	EA	1	
3	18	XBHZZ		28480	04260-7114	GEAR ASSY SELECTIVE	EA	1	
3	19	XBHZZ		28480	04260-7115	GEAR ASSY SELECTIVE	EA	1	
3	20	XBHZZ		28480	04260-7116	GEARY ASSY SELECTIVE	EA	1	
3	21	XBHZZ		28480	04260-7117	GEAR ASSY SELECTIVE	EA	1	
3	22	XBHZZ		28480	04260-7118	GEAR ASSY SELECTIVE	EA	1	
3	23	XBHZZ		28480	04260-7119	GEAR ASSY SELECTIVE	EA	1	
3	24	XBHZZ		28480	04260-7120	GEAR ASSY SELECTIVE	EA	1	
3	25	PAHZZ	5305-00-709-2010	96906	MS24693C23	SCREW, MACHINE	EA	2	



EL9LH009

Figure 4. Gear Assembly (A700A1).

SECTION II								
(1)	(2)	(3)	(4)	(5)	(6)	(7)	(8)	
ILLUSTRATION					DESCRIPTION		QTY	
(a)	(b)	NATIONAL		PART			INC	
FIG	ITEM	STOCK		NUMBER		USABLE ON CODE	IN	
NO	NO	NUMBER	FSCM	NUMBER			UNIT	
GROUP 0701 GEAR ASSEMBLY (A700A)								
4	1	XBHZZ	28480	04260-3115	GEAR, SPUR		EA 3	
4	2	XBHZZ	28480	04260-3038	SHAFT, SHOULDERED		EA 1	
4	3	XBHZZ	28480	04260-3036	GEAR, SPUR		EA 1	
4	4	XBHZZ	79136	5133-14SZDR	RING, RETAINING		EA 2	
4	5	XBHZZ	28480	04260-1071	BRACKET, ANGLE		EA 1	
4	6	XBHZZ	28480	04260-1030	WASHER, FLAT		EA 1	
4	7	XBHZZ	28480	04260-3033	HUB, BODY		EA 1	
4	8	XBHZZ	28480	04260-3032	SHAFT, STRAIGHT		EA 1	
4	9	XBHZZ	28480	04260-3031	HUB, BODY		EA 1	
4	10	PAHZZ	5365-01-10-5414	28480	3050-0201	SHIM	EA 2	
4	11	XBHZZ	28480	04260-1029	WASHER, FLAT		EA 1	
4	12	XBHZZ	28480	04260-1031	WASHER, CONVEX		EA 1	
4	13	XBHZZ	28480	04260-1042	FRAME		EA 1	
4	14	XBHZZ	28480	04260-1064	BRACKET, ANGLE		EA 1	
4	15	PAHZZ	5305-00-777-6039	96906	MS51959-12	SCREW, MACHINE	EA 4	
4	16	XBHZZ	28480	04260-3037	SHAFT, SHOULDERED		EA 1	
4	17	XBHZZ	28480	04260-3035	GEAR, SPUR		EA 1	
4	18	XBHZZ	28480	04260-1043	DISC, DRIVE		EA 1	
4	19	XBHZZ	28480	1460-0305	SPRING, TENSION		EA 1	
4	20	PAHZZ	5310-00-616-3554	96906	MS35335-29	WASHER, LOCK	EA 8	
4	21	PAHZZ	5305-00-054-6651	96906	MS51957-27	SCREW, MACHINE	EA 8	
4	22	PAHZZ	6625-00-030-4032	18911	4D32424-400AC	COUNTER DIGITAL	EA 1	
4	23	XBHZZ	28480	04260-3039	SPACER, THREADED		EA 5	
4	24	XBHZZ	79136	555-25S2D	RING, RETAINING		EA 1	

## NATIONAL STOCK NUMBER AND PART NUMBER INDEX

STOCK NUMBER	FIGURE NO.	ITEM NO.	STOCK NUMBER	FIGURE NO.	ITEM NO.
6150-00-008-5075	1	84	6625-00-412-1207	1	46
6625-00-030-4032	4	22	6625-00-432-5216	2	33
5310-00-045-3296	2	67	6625-00-432-5217	2	35
5305-00-054-5636	1	28	595-00-451-3196	1	52
5305-00-054-5644	2	18	5950-00-451-3197	1	59
5305-00-054-5651	1	70	5910-00-451-3249	1	42
5305-00-054-5652	1	83	5905-00-451-5152	2	56
5305-00-054-5653	1	87	5905-00-451-5167	1	88
5305-00-054-5653	2	13	5325-00-493-8271	1	81
5305-00-054-6650	1	41	5310-00-515-7999	2	40
5305-00-054-6651	1	18	5310-00-543-2410	1	37
5305-00-054-6651	1	32	531-00-550-3715	1	69
5305-00-054-6651	4	21	5310-00-578-4942	1	38
5310-00-058-3599	1	86	5355-00-579-2318	1	77
5310-00-058-3599	2	8	5310-00-616-3554	1	31
5305-00-066-7326	1	50	5310-00-616-3554	4	20
5305-00-066-7328	3	7	5305-00-709-2010	3	25
5355-00-083-8162	1	12	5305-00-717-6948	3	13
5355-00-083-8438	1	8	5910-00-725-7012	1	16
5905-00-093-0945	1	26	5910-00-728-2194	2	45
5905-00-098-8789	2	58	5305-00-766-2422	2	53
5905-00-106-1356	1	71	5355-00-767-9444	1	9
5905-00-110-0388	1	33	5305-00-777-6039	4	15
5999-00-112-9509	1	60	6625-00-818-5973	1	78
6625-00-139-0498	1	58	5310-00-905-9862	1	64
6625-00-139-0499	1	57	5310-00-928-2690	1	29
6625-00-139-0500	1	56	5310-00-930-2722	2	14
6625-00-139-0516	1	68	5310-00-934-9761	1	30
5310-00-167-083	2	66	5310-00-934-9761	2	41
5920-00-229-1312	1	22	5310-00-934-9765	2	68
6625-00-232-0934	1	75	5961-00-954-9182	1	72
5940-00-345-9620	2	9	5305-00-958-5453	1	63
5920-00-356-2185	1	21	5340-00-978-5186	1	51
5999-00-360-6462	2	22	5340-00-978-7859	1	76
5999-00-360-6466	2	23	5310-00-997-3078	2	21
5999-00-360-6467	2	24	5970-01-005-2884	1	25
5999-00-360-6468	2	50	5920-01-027-0358	1	24
5999-00-360-6476	2	42	6210-01-064-6431	1	79
5999-00-360-6477	2	71	5920-01-079-6571	1	20
5999-00-360-6497	2	52	5920-01-079-6571	1	23
5310-00-401-5666	1	17	5365-01-100-5414	4	10
5355-00-411-2591	1	7			

FSCM	PART NUMBER	FIGURE NO.	ITEM NO.	FSCM	PART NUMBER	FIGURE NO.	ITEM NO.
88044	AN960-10L	2	66	96906	MS35649-264	1	30
81349	CC20CH4R0C	2	72	96906	MS35649-264	2	41
81349	CC20SH100F	1	16	96906	MS35650-304	2	68
S0345	CM9882H122KZ	1	47	96906	MS51957-11	2	178
S0345	CM9882H332KZ	1	40	96906	MS51957-17	1	70
S0333	FNX-H2P22K	2	46	96906	MS51957-18	1	83
81349	F02B250V1-16A	1	22	96906	MS51957-18	1	83
16428	KH7081	1	84	96906	MS51957-19	2	7
70542	MEBTO-3001F	2	44	96906	MS51957-19	2	13
75042	MEBTO-3002F	2	43	96906	MS51957-2	1	28
75042	MEBTO-9702F	2	48	96906	MS51957-26	1	41
75042	MEBT9-9703F	2	47	96906	MS51957-27	1	18
75042	MECT9-1000B	2	75	96906	MS51957-27	1	32
75042	MECT9-1001B	2	73	96906	MS51957-27	4	21
75042	MECT9-1002B	2	49	96906	MS51959-1	2	53
07716	MEC79-5000B	1	45	96906	MS51959-12	4	15
19701	MF6C01R0F	2	10	96906	MS51963-11	3	13
96906	MS24693C23	3	25	S0333	MXT5D22K	2	57
96906	MS24693C24	1	50	81349	RCR07G104JS	1	33
96906	MS24693C27	3	7	81349	RCR07G152JS	1	71
96906	MS24696C25	1	62	81349	RNC65K15R8FS	1	43
96906	MS35190-236	1	63	S0558	RV24NY35R85K	1	73
96906	MS35333-70	1	69	S0542	SL262B4L	1	34
96906	MS35335-29	1	31	28480	0121-0236	1	15
96906	MS35335-29	4	20	28480	0160-1540	1	42
96906	MS35335-57	1	86	28480	0160-1654	1	49
96906	MS35335-57	2	8	28480	0360-0701	1	48
96906	MS35336-56	1	64	28480	0360-0749	3	10
81349	MS35338-134	1	29	28480	0370-0050	1	77
96906	MS35338-40	1	37	28480	0370-0256	1	8
96906	MS35338-43	2	67	28480	0370-0267	1	13
96906	MS35339-40	2	40	28480	0370-0272	1	12

## NATIONAL STOCK NUMBER AND PART NUMBER INDEX

FSCM	PART NUMBER	FIGURE		ITEM		FSCM	PART NUMBER	FIGURE		ITEM	
		NO.	NO.	NO.	NO.			NO.	NO.		
28480	0370-0275	1	7	28480			04260-7023	1		57	
28480	0370-0914	1	79	28480			04260-7026	1		68	
28480	0380-0033	2	39	28480			04260-7027	3		2	
28480	04255-8604	2	56	28480			04260-7028	1		67	
28480	04260-01202	1	65	28480			04260-7029	3		5	
28480	04260-10021	1	11	28480			04260-7031	1		88	
28480	04260-10023	1	82	28480			04260-7045	2		52	
28480	04260-1022	2	69	28480			04260-7053	1		53	
28480	04260-1025	2	3	28480			04260-7058	3		9	
28480	40260-1029	4	11	28480			04260-7110	3		14	
28480	04260-1030	4	6	28480			04260-7111	3		15	
28480	04260-1031	4	12	28480			04260-7112	3		16	
28480	04260-1034	1	85	28480			04260-7113	3		17	
28480	04260-1042	4	13	28480			04260-7114	3		18	
28480	04260-1043	4	18	28480			04260-7115	3		19	
28480	04260-1044	3	4	28480			04260-7116	3		20	
28480	04260-1047	3	6	28480			04260-7117	3		21	
28480	04260-1049	1	27	28480			04260-7118	3		22	
28480	04260-1055	2	50	28480			04260-7119	3		23	
28480	04260-1058	2	51	28480			04260-7120	3		24	
28480	04260-1060	2	16	28480			04260-7202	1		55	
28480	04260-1064	4	14	28480			04260-7203	1		44	
28480	04260-1065	2	26	28480			04260-7724	1		56	
28480	04260-1067	2	33	28480			04260-8543	2		60	
28480	04260-1068	2	61	28480			04260-8547	2		34	
28480	04260-1069	2	28	28480			04260-8602	1		52	
28480	04260-1070	2	63	28480			04260-8603	1		59	
28480	04260-1071	4	5	28480			40260-8604	2		58	
28480	04260-1073	2	42	28480			04260-8701	2		70	
28480	40260-1074	2	71	28480			047260-8707	2		55	
28480	04260-1079	2	6	28480			0510-0328	2		31	
28480	04260-1086	1	66	28480			0510-0397	2		27	
28480	04260-3020	2	62	28480			0570-0212	1		3	
28480	04260-3027	2	4	28480			0570-0380	1		39	
28480	04260-3028	2	5	28480			0590-0234	1		36	
28480	04260-3031	4	9	18876			10018550-104	1		21	
28480	04260-3032	4	8	28480			112-0768	1		5	
28480	04260-3033	4	7	79963			123-.144	1		54	
28480	04260-3035	4	17	28480			1410-0033	1		78	
28480	04260-3036	4	3	28480			1460-0305	3		1	
28480	04260-3037	4	16	28480			1460-0305	4		19	
28480	04260-3038	4	2	28480			1480-0008	2		15	
28480	04260-3039	4	23	28480			1480-0085	2		38	
28480	04260-3041	3	8	28480			1490-0032	1		75	
28480	04260-3045	2	30	28480			1510-0011	2		9	
28480	04260-3046	2	29	28480			1910-0016	1		72	
28480	04260-3047	2	54	28480			2110-0470	1		24	
28480	04260-3050	2	32	28480			2190-0775	1		17	
28480	04260-3052	2	11	28480			2260-0002	2		21	
28480	04260-3056	2	35	28480			3050-0067	2		17	
28480	04260-3057	2	36	28480			3050-0105	1		38	
28480	04260-3115	4	1	28480			3050-0201	4		10	
28480	04260-5021	2	64	75915			345001-020	1		20	
28480	04260-5021	2	64	75915			345001-020	1		20	
28480	04260-5021	2	64	75915			345001-020	1		20	
28480	04260-5022	2	65	1538			275	1		81	
28480	04260-5024	1	6	18911			4032424-400AC	4		22	
28480	04260-5025	3	11	28480			5000-0206	2		14	
28480	04260-5026	3	3	28480			5000-8565	1		51	
28480	04260-5027	1	4	28480			5000-8583	1		61	
28480	04260-5027	1	4	28480			5000-8583	1		61	
28480	04260-5028	1	26	5899			5027-520	1		9	
28480	04260-5030	1	2	28480			5040-0700	1		76	
28480	04260-5043	2	74	28480			5040-1124	1		10	
28480	04260-5049	2	22	28480			5060-0703	1		46	
28480	04260-5051	2	19	28480			5060-8573	1		14	
28480	04260-5052	2	25	79136			5133-14SZDR	2		37	
28480	04260-5053	2	59	79136			5133-14SZDR	3		12	
28480	04260-5054	2	12	79136			5133-14SZDR	4		4	
28480	04260-5056	2	23	79136			5555-25SZD	4		24	
28480	40260-5057	2	20	72982			557-062UPO-34R	2		45	
28480	04260-5061	2	1	28480			7120-0461	1		19	
28480	04260-5062	2	2	28480			7120-1254	1		1	
28480	04260-60010	1	80	75915			901-129	1		25	
28480	04260-70020	1	74	75915			903-070	1		23	
28480	04260-7022	1	58	78584			922	1		35	



RECOMMENDED CHANGES TO EQUIPMENT TECHNICAL PUBLICATIONS



THEN . . . JOT DOWN THE DOPE ABOUT IT ON THIS FORM. CAREFULLY TEAR IT OUT. FOLD IT AND DROP IT IN THE MAIL!

SOMETHING WRONG WITH THIS PUBLICATION?

FROM (PRINT YOUR UNIT'S COMPLETE ADDRESS)  
 Commander  
 Stateside Army Depot  
 ATTN: AMSTA-US  
 Stateside, N.J. 07703

DATE SENT  
 10 July 1975

PUBLICATION NUMBER TM 11-5840-340-20P	PUBLICATION DATE 23 Jan 78	PUBLICATION TITLE Radar Set AN/PRC-76
--	-------------------------------	--

BE EXACT PIN-POINT WHERE IT IS				IN THIS SPACE TELL WHAT IS WRONG AND WHAT SHOULD BE DONE ABOUT IT:
PAGE NO	PARA-GRAPH	FIGURE NO	TABLE NO	
33				For item 2, change the NSN to read: 5835-00-134-9186. Reason: Accuracy.
44		19		Identify the cover on the junction box (. . . 5). Reason: It is a separate item and is not ca. . . . on figure 19.
45				Add the cover of the junction box as an item in the listing for figure 19. Reason: Same as above

SAMPLE

TEAR ALONG PERFORATED LINE

PRINTED NAME GRADE OR TITLE AND TELEPHONE NUMBER  
 SSG I. M. DeSpirit of 999-1776

SIGN HERE

FILL IN YOUR  
UNIT'S ADDRESS

FOLD BACK

DEPARTMENT OF THE ARMY

\_\_\_\_\_  
\_\_\_\_\_

OFFICIAL BUSINESS  
PENALTY FOR PRIVATE USE \$300

POSTAGE AND FEES PAID  
DEPARTMENT OF THE ARMY  
DOD 314



**SAMPLE**

Commander  
US Army Communications-Electronics Command  
and Fort Monmouth  
ATTN: DRSEL-ME-MP  
Fort Monmouth, New Jersey 07703

TEAR ALONG PERFORATED LINE



RECOMMENDED CHANGES TO EQUIPMENT TECHNICAL PUBLICATIONS



THEN...JOT DOWN THE  
DOPE ABOUT IT ON THIS  
FORM. CAREFULLY TEAR  
IT OUT, FOLD IT AND  
DROP IT IN THE MAIL.

SOMETHING WRONG WITH THIS PUBLICATION?

FROM: (PRINT YOUR UNIT'S COMPLETE ADDRESS )

DATE SENT

PUBLICATION NUMBER

TM 11-6625-3077-24P

PUBLICATION DATE

15 NOV 83

PUBLICATION TITLE

Impedance Bridge ZM-71A/U

BE EXACT PIN-POINT WHERE IT IS

PAGE NO.	PARA-GRAPH	FIGURE NO.	TABLE NO.

IN THIS SPACE TELL WHAT IS WRONG  
AND WHAT SHOULD BE DONE ABOUT IT:

TEAR ALONG PERFORATED LINE

PRINTED NAME GRADE OR TITLE AND TELEPHONE NUMBER

SIGN HERE

FILL IN YOUR  
UNIT'S ADDRESS

FOLD BACK

DEPARTMENT OF THE ARMY

OFFICIAL BUSINESS  
PENALTY FOR PRIVATE USE \$300

POSTAGE AND FEES PAID  
DEPARTMENT OF THE ARMY  
DOD 314



TEAR ALONG PERFORATED LINE

Commander  
US Army Communications-Electronics Command  
and Fort Monmouth  
ATTN: DRSEL-ME-MP  
Fort Monmouth, New Jersey 07703

RECOMMENDED CHANGES TO EQUIPMENT TECHNICAL PUBLICATIONS



**SOMETHING WRONG** WITH THIS PUBLICATION?

*THEN...JOT DOWN THE DOPE ABOUT IT ON THIS FORM. CAREFULLY TEAR IT OUT, FOLD IT AND DROP IT IN THE MAIL.*

FROM: (PRINT YOUR UNIT'S COMPLETE ADDRESS)

DATE SENT

PUBLICATION NUMBER

TM 11-6625-3077-24P

PUBLICATION DATE

15 NOV 83

PUBLICATION TITLE

Impedance Bridge ZM-71A/U

BE EXACT PIN-POINT WHERE IT IS

PAGE NO.	PARA-GRAPH	FIGURE NO.	TABLE NO.

IN THIS SPACE TELL WHAT IS WRONG AND WHAT SHOULD BE DONE ABOUT IT:

TEAR ALONG PERFORATED LINE

PRINTED NAME GRADE OR TITLE AND TELEPHONE NUMBER

SIGN HERE

DA FORM 2028-2  
1 JUL 79

PREVIOUS EDITIONS ARE OBSOLETE

P.S.--IF YOUR OUTFIT WANTS TO KNOW ABOUT YOUR RECOMMENDATION MAKE A CARBON COPY OF THIS AND GIVE IT TO YOUR HEADQUARTERS.

FILL IN YOUR  
UNIT'S ADDRESS

FOLD BACK

DEPARTMENT OF THE ARMY

\_\_\_\_\_  
\_\_\_\_\_

OFFICIAL BUSINESS  
PENALTY FOR PRIVATE USE \$300

POSTAGE AND FEES PAID  
DEPARTMENT OF THE ARMY  
DOD 314



TEAR ALONG PERFORATED LINE

Commander  
US Army Communications-Electronics Command  
and Fort Monmouth  
ATTN: DRSEL-ME-MP  
Fort Monmouth, New Jersey 07703

RECOMMENDED CHANGES TO EQUIPMENT TECHNICAL PUBLICATIONS



THEN...JOT DOWN THE DOPE ABOUT IT ON THIS FORM. CAREFULLY TEAR IT OUT, FOLD IT AND DROP IT IN THE MAIL.

SOMETHING WRONG WITH THIS PUBLICATION?

FROM: (PRINT YOUR UNIT'S COMPLETE ADDRESS)

DATE SENT

PUBLICATION NUMBER

TM 11-6625-3077-24P

PUBLICATION DATE

15 NOV 83

PUBLICATION TITLE

Impedance Bridge ZM-71A/U

BE EXACT PIN-POINT WHERE IT IS

PAGE NO.	PARA-GRAPH	FIGURE NO.	TABLE NO.

IN THIS SPACE TELL WHAT IS WRONG AND WHAT SHOULD BE DONE ABOUT IT:

TEAR ALONG PERFORATED LINE

PRINTED NAME GRADE OR TITLE AND TELEPHONE NUMBER

SIGN HERE

DA FORM 2028-2  
JUL 79

PREVIOUS EDITIONS ARE OBSOLETE

P.S.--IF YOUR OUTFIT WANTS TO KNOW ABOUT YOUR RECOMMENDATION MAKE A CARBON COPY OF THIS AND GIVE IT TO YOUR HEADQUARTERS.



By Order of the Secretary of the Army:

JOHN A. WICKHAM JR.  
*General, United States Army*  
*Chief of Staff*

Official:

ROBERT M. JOYCE  
*Major General, United States Army*  
*The Adjutant General*

DISTRIBUTION:

To be distributed in accordance with DA Form 12-36B,  
Organizational Maintenance requirements for ZM-71/U.

\* U.S. GOVERNMENT PRINTING OFFICE : 1987 0 - 181-421 (70724)

